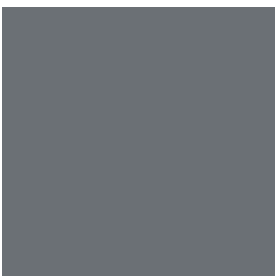
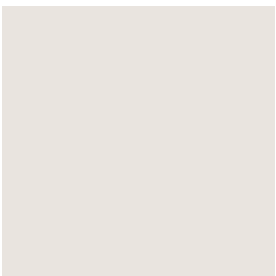
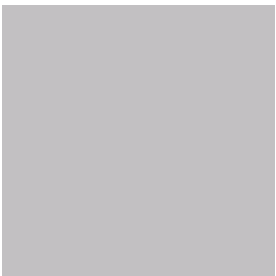


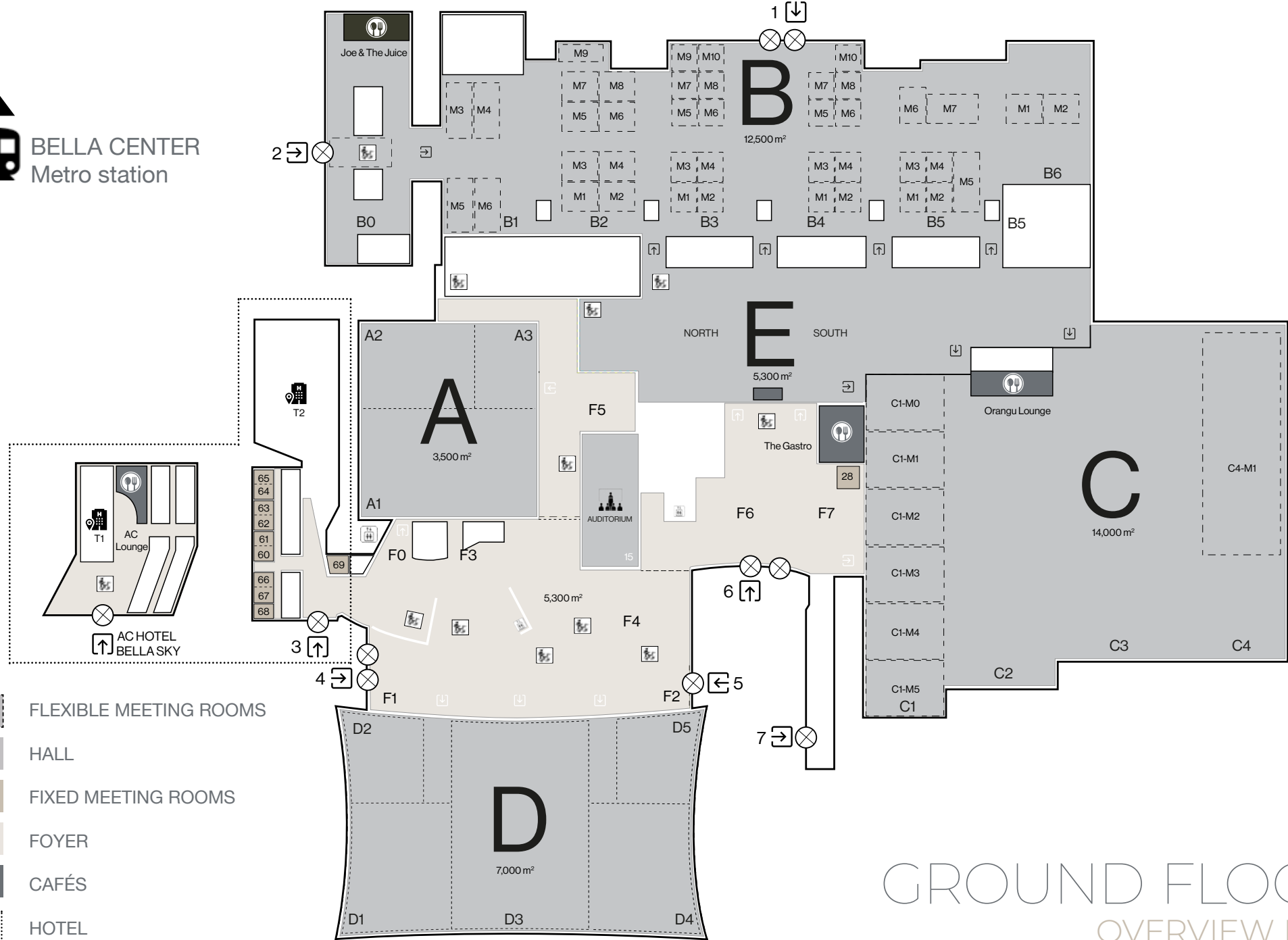
FLOOR PLAN & CAPACITY CHART



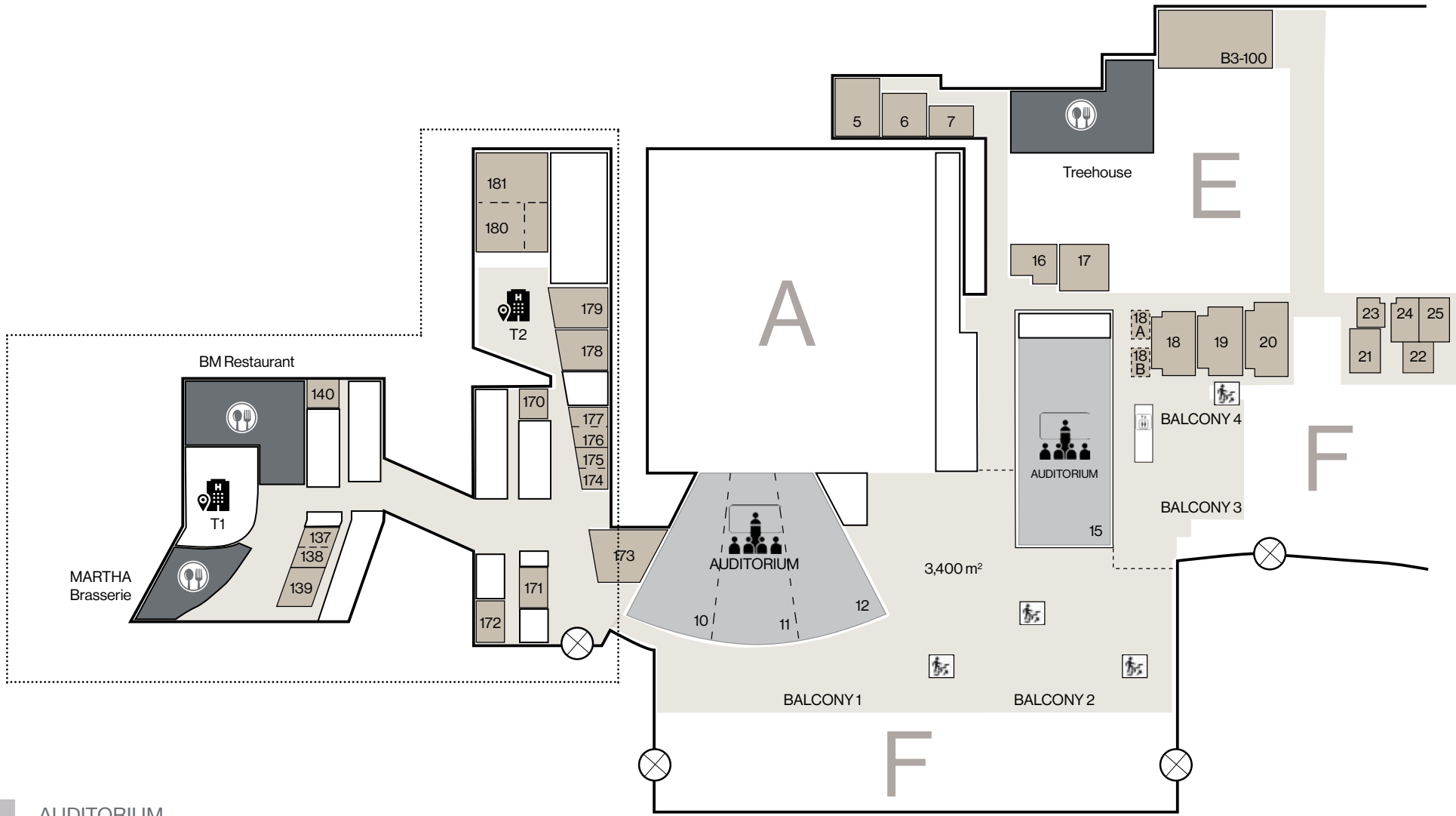
**AC HOTEL BELLA SKY
COPENHAGEN**



BELLA CENTER
Metro station



GROUND FLOOR OVERVIEW MAP



- AUDITORIUM
- FIXED MEETING ROOMS
- FOYER
- CAFÉS
- HOTEL

FIRST FLOOR OVERVIEW MAP

MEETING ROOMS- GROUND FLOOR

	Sqm.	Sq. Ft.	Dimensions L / W / H in Meters	Daylight	Theatre	Classroom	Cabaret 6 per table	Banquet** 8 per table	U-shape	Hollow square	Boardroom	Notes
60-67 (8 rooms)	19	200	5 / 3.7 / 4.2	yes							9	
2 rooms combined	38	410	5 / 7.5 / 4.2	yes	38*	8 (12*)		16*	10	16*	12	
68	15	160	5 / 2.9 / 4.2	yes							8	
69	26	280	5 / 5.4 / 4.2	yes	27	12		16	10 (14*)	16	8 (14*)	
28	11	120	4.1 / 2.7 / 2.5	no							8	

HALL B

Hall B can offer up to 40 flexible meeting rooms, of which many can be combined

1 room (B3/B4/B5)	81	870	9 / 9 / 3.2	yes/no	72	30	36	32	20	24	16	max. 22 rooms
2 rooms combined	162	1740	18 / 9 / 3.2	yes/no	168	80	60	64	38	48	40	max. 11 rooms
3 rooms combined	243	2620	27 / 9 / 3.2	yes	252	120	96	112	68	60		max. 3 rooms
4 rooms combined	324	3490	18 / 18 / 3.2	no	338	160	132	136	52	76		max. 5 rooms
6 rooms combined (B3 M5-M10)	486	5230	18 / 27 / 3.2	yes	546	260	210	232	76	104		
B1 M1-M4	162	1740	9 / 18 / 3.2	no	168	80	60	64	44	52	40	max. 4 rooms, 2 combinable
B2 M1-M8	96	1030	10.7 / 9 / 3.2	no	72	40	36	48	24	32	20	max. 8 rooms, 2-4 combinable
B2 M9	96	1030	14 / 6 / 3.2	yes	60	36	36	48	24	32	28	
B5 M5	162	1740	9 / 18 / 3.2	no	168	80	60	64	40	52	16	
B5 M6	108	1160	9 / 12 / 3.2	no	84	40	36	48	24	36	24	
B5 M7	162	1740	18 / 9 / 3.2	no	156	64	60	64	42	52	40	
B6 M1/M2	108	1160	12 / 9 / 3.2	no	96	40	36	48	24	32	24	

HALL C

Large flexible meeting rooms can be established in Hall C1 and C4

C1 M0	420	4520	22.4 / 18 / 4.5	no	420	242	204	232				
C1 M1/M2/M3/M4/M5	470	5040	26 / 18 / 4.5	no	420	264	210	240				max. 5 rooms (C1-M1: 560)
2 rooms combined	940	10080	26 / 36 / 4.5	no	924	528	420	480				max. 3 rooms
3 rooms combined	1350	14600	26 / 52 / 4.5	no	1380	792	630	720				max. 2 rooms
C4 M1	1950	20930	27 / 72 / 7.4	no	2416	1108	816	944				
C4 M2	1450	15820	27 / 55 / 7.4	no	1736	820	600	704				Not available when C4/M1 is in use

*Requires change of AV and/or furniture

**Banquet seating, space for catering station is not included

Hall A and Hall D: For capacities up to 7000 see page 12

	Sqm.	Sq. Ft.	Dimensions L / W / H in Meters	Daylight	Theatre	Classroom	Cabaret 6 per table	Banquet 8 per table	U-shape	Hollow square	Boardroom	Notes
5	108	1160	9 / 12 / 2.7	indirect	93	50	36	48	34	44	28	
6	81	870	9 / 9 / 2.7	indirect	49	30	36	48	24	32	20	
7	54	580	9 / 6 / 2.7	indirect	36	18	18	32	18	24	20	
5-6	189	2030	18 / 9-12 / 2.7	indirect	166	98	72	88	46	50		
6-7	146	1570	18 / 6-9 / 2.7	indirect	103	62	36	48	42	46		
5-7	250	2730	27 / 6-12 / 2.7	indirect	200	124	90	104				
16	46	500	8.9 / 6.1 / 2.9	indirect	48	32	24	40	22	28	20	
17	81	870	9 / 9 / 2.9	indirect	48	48	36	48	26	36	20	
18a /18b	18	190	5 / 3.5 / 2.9	no							8	2 rooms
18	108	1160	12 / 9 / 3.6	indirect	97	46	36	64	28	36	32	
19	117	1260	13 / 9.3 / 3.6	indirect	111	50	48	64	34	40	32	
18-19	216	2520	13 / 18 / 3.6	indirect	200	94	78	104	48	60		
20	126	1360	14 / 9 / 3.7	indirect	123	56	48	64	34	40	32	
21	49	530	8.5 / 5.8 / 3.3	indirect							18	
22	35	380	7 / 5 / 3.1	indirect							14	
23	28	300	5.5 / 5.2 / 2.9	indirect							12	
24	28	300	4 / 7 / 2.9	indirect							10	can be combined
25	28	300	4 / 7 / 2.7	indirect							10	can be combined
137	20	220	5.3 / 3.7 / 4.2	indirect		8*					9 (11)	
138	20	220	5.3 / 3.7 / 4.2	indirect		8*					9 (12)	
137-138	40	430	5.4 / 7.5 / 4.2	indirect	30*	12 (16')			10		12 (18)	
139	42	450	5.6 / 7.5 / 4.2	indirect							14	
140 VIP	36	390	5.8 / 6.4 / 4.2	yes							13	
170	26	280	5.8 / 4.7 / 3.7	yes							8	
171 VIP	44	470	6.1 / 7.3 / 3.7	indirect							13	
172 VIP	35	380	5.7 / 6.4 / 4.2	yes							13	
173	100	1250	11 / 10.4 / 3.7	yes	95	48	42	56	28	32	28	
174	19	210	4.8 / 3.7 / 3.7	yes							9 (12)	
175	21	230	4.8 / 3.8 / 3.7	yes							9 (12)	
174-175	42	450	4.8 / 7.5 / 3.7	yes	38*	16	18*		10 (14')		12 (18)	
176	23	250	6.7 / 3.7 / 3.7	yes							9 (12)	
177	23	250	5.7 / 3.8 / 3.7	yes							9 (12)	
176-177	47	510	5.7 / 7.5 / 3.7	yes	38*	16	18*		10 (14')		12 (18)	
178	62	670	8.3 / 7.6 / 3.7	yes	49	24	30	40	18	24	16	
179	70	750	9.3 / 7.6 / 3.7	yes	49	24	30	40	18	24	16	
180	117	1260	10.8 / 10.7 / 3.7	yes	96	48	48	48	28	40	20	Reception max 170
181	158	1700	10.7 / 14.5 / 3.7	yes	120	60	48	48	36	44	32	Reception max 170
180+181 Ballroom	320	3500	14.5 / 21.6 / 3.7	yes	315	160	126	160	42	72	48	
AUDITORIUM 10/11/12	395	4250	10-18 / 26 / 7.7	no	310							10/11/12 can be combined
AUDITORIUM 10-12	1185	12760	30-54 / 26 / 7.7	no	930							
AUDITORIUM 15	720	7750	18 / 40 / 9.5	no	582							also access from ground floor

HALL A

	Sqm.	Sq. Ft.	Dimensions L / W / H in Meters	Daylight	Max Persons*	Theatre	Classroom	Cabaret 6 per table	Banquet** 8 per table	Notes
Hall A	3500	37660	56 / 63 / 9	no	4200	4100	2146	1746	1960	Adjustable ceiling height
A1	2000	21530	56 / 36 / 9	no		2400	1128	984	1112	
A2	1000	10570	37 / 27 / 9	no		1054	472	414	440	
A3	500	5560	19 / 27 / 9	no		561	258	210	232	
A2+A3	1500	16140	57 / 27 / 9	no		1730	810	660	784	

HALL B

Hall B, incl. light arcades	12500	133900	243 / 45-81 / 3-3.3	yes	6100				5142***	
B0/1	1000	10740	27 / 45 / 3.3	yes	600	390	228	244	288	
B0/2	785	8470	27 / 36 / 3.3	yes		390	216	216	232	
B1	1860	20050	36 / 54 / 3	yes					786***	Incl. 390 sqm. light arcade
B2	1985	21390	36 / 63 / 3	yes					984***	Incl. 365 sqm. light arcade
B3	2070	22260	36 / 63 / 3	yes					984***	Incl. 365 sqm. light arcade
B4	2070	22260	36 / 63 / 3	yes					984***	Incl. 365 sqm. light arcade
B5	1900	20480	36 / 57 / 3	yes					876***	Incl. 390 sqm. light arcade
B6	1200	13080	27 / 45 / 3	no					528***	

HALL C

Hall C, including light arcades	14000	158000	135 / 96-108 / 4-7.4	yes	8000				5382***	
C1	3800	40970	36 / 108 / 4.3	yes					1242***	Incl. 890 sqm. light arcade
C2	3500	37480	37 / 96 / 5.8	yes					1452***	Incl. 890 sqm. light arcade
C3	3900	41850	36 / 108 / 7.4	yes					1532***	Incl. 970 sqm. light arcade
C4	2800	30520	27 / 108 / 7.4	yes					1056***	

HALL D

Hall D	7000	72050	102 / 63 / 12	yes	8600	7000	4000 ⁽¹⁾	3474	3512	⁽¹⁾ subject to available furniture
D1	1210	13020	30 / 38 / 12	yes	1300	1300	630	516	576	
D2	675	7100	24 / 27 / 12	yes	750	648	296	252	320	
D3	2700	28430	42 / 63 / 12	yes	2850	2850	1526	1404	1392	
D4	1210	13020	30 / 38 / 12	yes	1300	1300	632	516	576	
D5	675	7100	24 / 27 / 12	yes	750	648	272	252	320	
D1-D2 / D4-D5	2030	21800	30 / 63 / 12	yes	2050	2049	1150	960	864	
D1-D3 or D3-D5	4700	50220	72 / 63 / 12	yes	4900	4899	2688	2310	1984	

HALL E

Hall E	5300	57080	170 / 18-44 / 7.4-21.8	yes	2500				2200	
E North	1950	21150	64 / 18-42 / 9.3-21.8	yes					648	
E South	3300	35930	106 / 26-44 / 7.4-15.8	yes					1296	

* max persons based on fire regulations, however depending on overall total

** not including space for F&B stations inside the hall

*** long tables

RESTAURANTS & CAFÉS

	Sqm.	Sq. Ft.	Dimensions L / W / H in Meter	Daylight	Standard Setup	Location	Notes
Treehouse North	220	2400	18 / 12 / 3.2	yes	124	First floor overlooking Hall E	
Treehouse South	200	2150	6-10 / 22 / 3.2	yes	114	First floor overlooking Hall E	
Treehouse	420	4550	28 / 22 / 3.2	yes	234	First floor overlooking Hall E	
The Gastro	280	3050	16 / 18 / 2.9	no	138	Foyer F7 and access to Hall E	
Orangu Lounge	190	2050	27 / 7 / 2.5	yes	109	Hall C2	
BM Restaurant	419	4500	24 / 14-22 / 5.3	yes	208	Hotel Tower 1, first floor	
MARTHA Brasserie	180	1950	15 / 12 / 5.3	yes	75	Hotel Tower 1, first floor	
AC Lounge	105	1200	7 / 15 / 5.3	yes	60	Hotel Tower 1, ground floor	
SUKAIBA	297	3200	25 / 15 / 2.4-3	yes	142	Hotel Tower 2, 23rd floor	
SUKAIBA Lounge	73	800		yes	28	Hotel Tower 2, 23rd floor	
Joe & The Juice	118	1250	14 / 8.3 / 3.2	yes	21 (+14)	Hall B0	

FOYERS & BALCONIES

	Sqm.	Sq. Ft.	Dimensions L / W / H in Meter	Daylight	Max persons*	Banquet	Notes
Foyer F0-F7	8300	89300		yes	7000		
Foyer F0	400	4350	11-17 / 26 / 3.3	yes			
Foyer F1	1100	11600	61 / 16-18 / 8.8-10	yes			
Foyer F2	650	7000	39 / 15-18 / 8.8-10	yes			
Foyer F3	2000	21100	52 / 35 / 3.3	yes			
Foyer F4	1125	12100	39 / 29 / 3.3	yes			
Foyer F5	950	10600	14 / 44 / 2.5	no			
Foyer F6	1200	1300	- / - / 3.3 - 8.2	yes	1600		Max. is including Balcony 3 & 4
Foyer F7	900	9600	18 / 34 / 8.2	yes			Max. is including Balcony 3 & 4
Balcony 1-4	3400	36400	- / - / 4	yes		1472	
Balcony 1	1450	15600	60 / 13-44 / 4	yes		520	
Balcony 2	1040	11200	38 / 24-44 / 4	yes		600	
Balcony 3	480	5200	25 / 20 / 4	yes		216	
Balcony 4	420	4500	18-25 / 20 / 4	yes		136	
Ballroom Foyer	200	2250	15 / 13 / 5	yes	132		

* max persons based on fire regulations, however depending on overall total

AC Hotel Bella Sky Copenhagen
Center Boulevard 5
DK - 2300 Copenhagen S
T: +45 3247 3000
E: congress@bellacenter.dk
W: bellacenter.dk

February 2024
Document is subject to change and type errors.



**AC HOTEL BELLA SKY
COPENHAGEN**