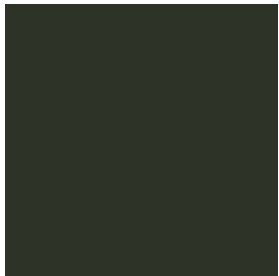
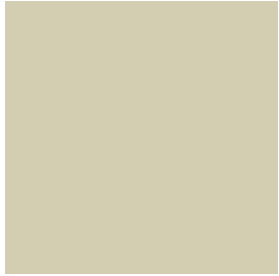
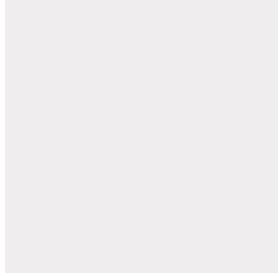
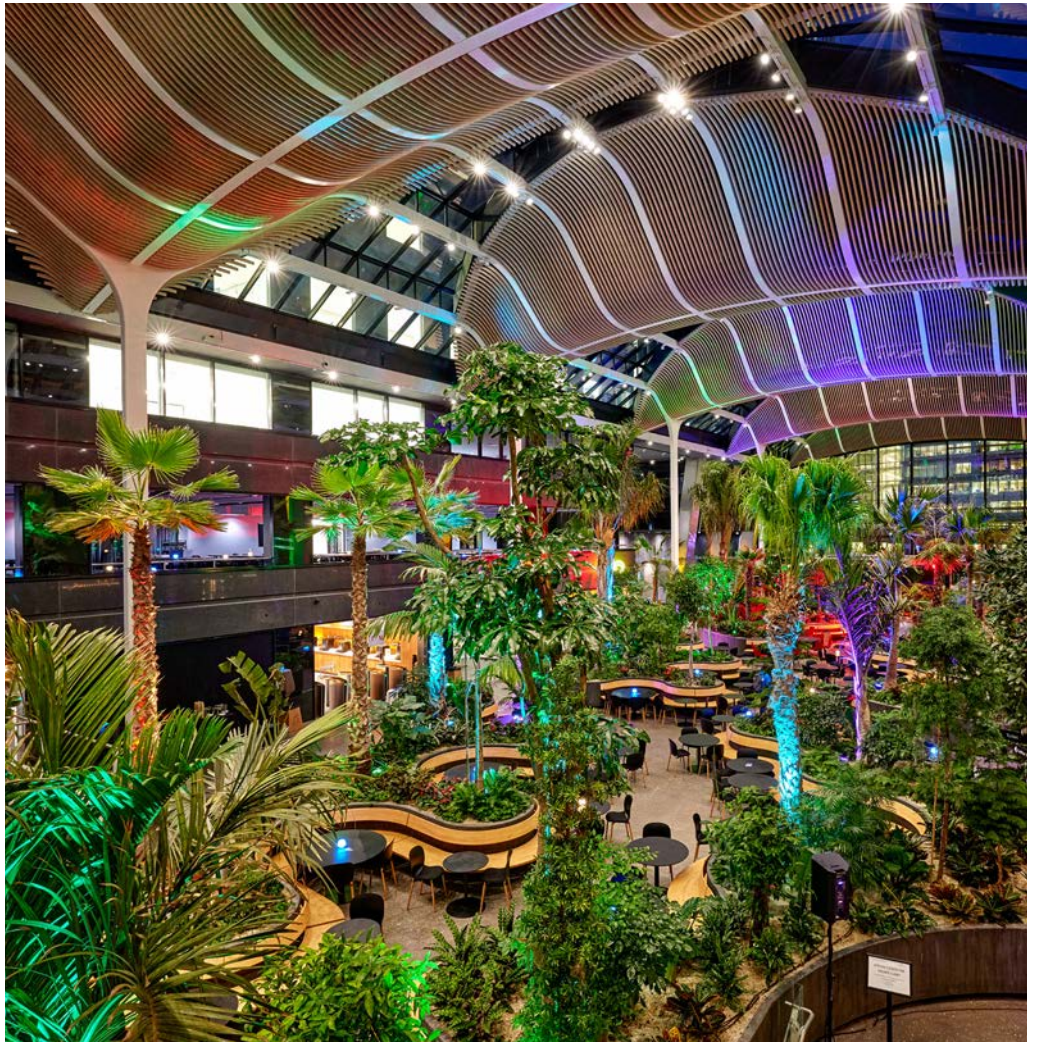
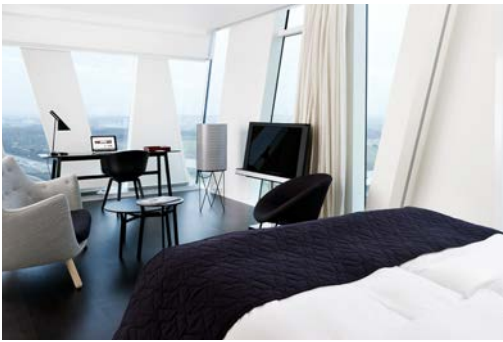
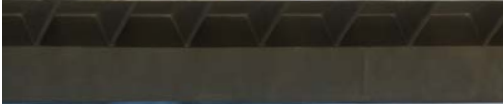
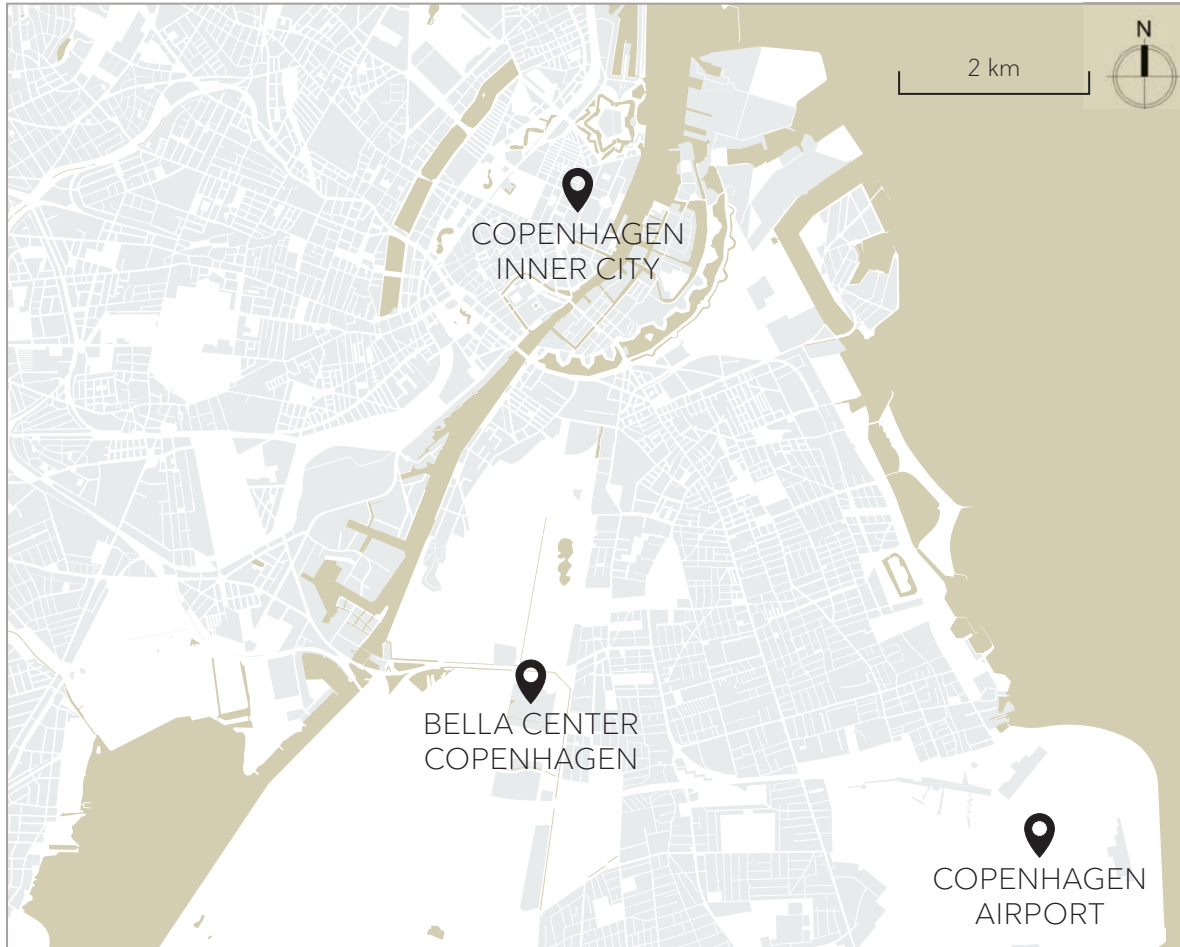


FLOOR PLAN & CAPACITY CHART



**BELLA ·
CENTER**
COPEN
HAGEN





OUR CITY

Copenhagen consistently ranks in the top for the world's most **livable, sustainable, and people-friendly cities**.

Compact and internationally-minded, the Danish capital is also one of the world's most popular congress destinations - complete with world-class design, architecture, dining, and cultural experiences Copenhagen is easily accessible with flight connections from all continents and **easy to navigate** once you arrive. Bella Center Copenhagen has its own metro station allowing for easy, affordable transport to the city center and multiple hotels.

Bella Center and the **on-site AC Hotel Bella Sky Copenhagen** are at the heart of Copenhagen's newest neighborhood, Bellakvarter (the Bella Quarter). Just outside the Bella Center, there is a large recreational area of outstanding natural beauty, perfect for a stroll, a morning run, or a round of golf on the nearby Royal Golf course.

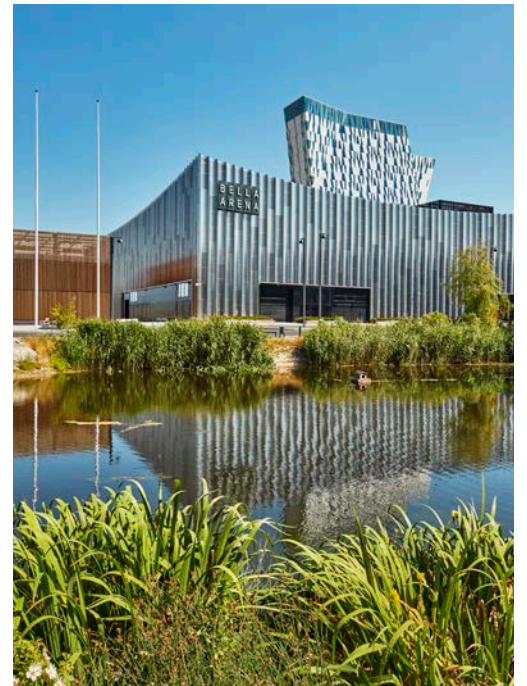
Close to the venue, you can shop in one of Scandinavia's largest shopping centers - Field's.



 Metro: Bella Center Copenhagen to city center **9 min.**

 Metro: CPH Airport to city center **12 min.**

 Taxi: CPH Airport to Bella Center Copenhagen **10 min.**



- 1 Entrance 1
Emma Gads Vej 25
- 2 Entrance 2
Martha Christensens Vej 18
- 3 Bella Sky Conference & Event
Martha Christensens Vej 10
- 4 Entrance 4
Martha Christensens Vej 8
- 5 Entrance 5
Center Boulevard 3
- 6 Entrance 6
Center Boulevard 5
- 7 Reception / International House
Center Boulevard 9
- 8 AC Hotel Bella Sky Copenhagen
Martha Christensens Vej 5



BELLA CENTER COPENHAGEN

As Scandinavia's leading venue, quality, efficiency, and flexibility are some of our top priorities.

Bella Center Copenhagen is a **flexible venue with multiple entrances**, which allows the space to be customized for every event. The venue offers **65,000 sqm. of event space** and can host up to 30,000 people.

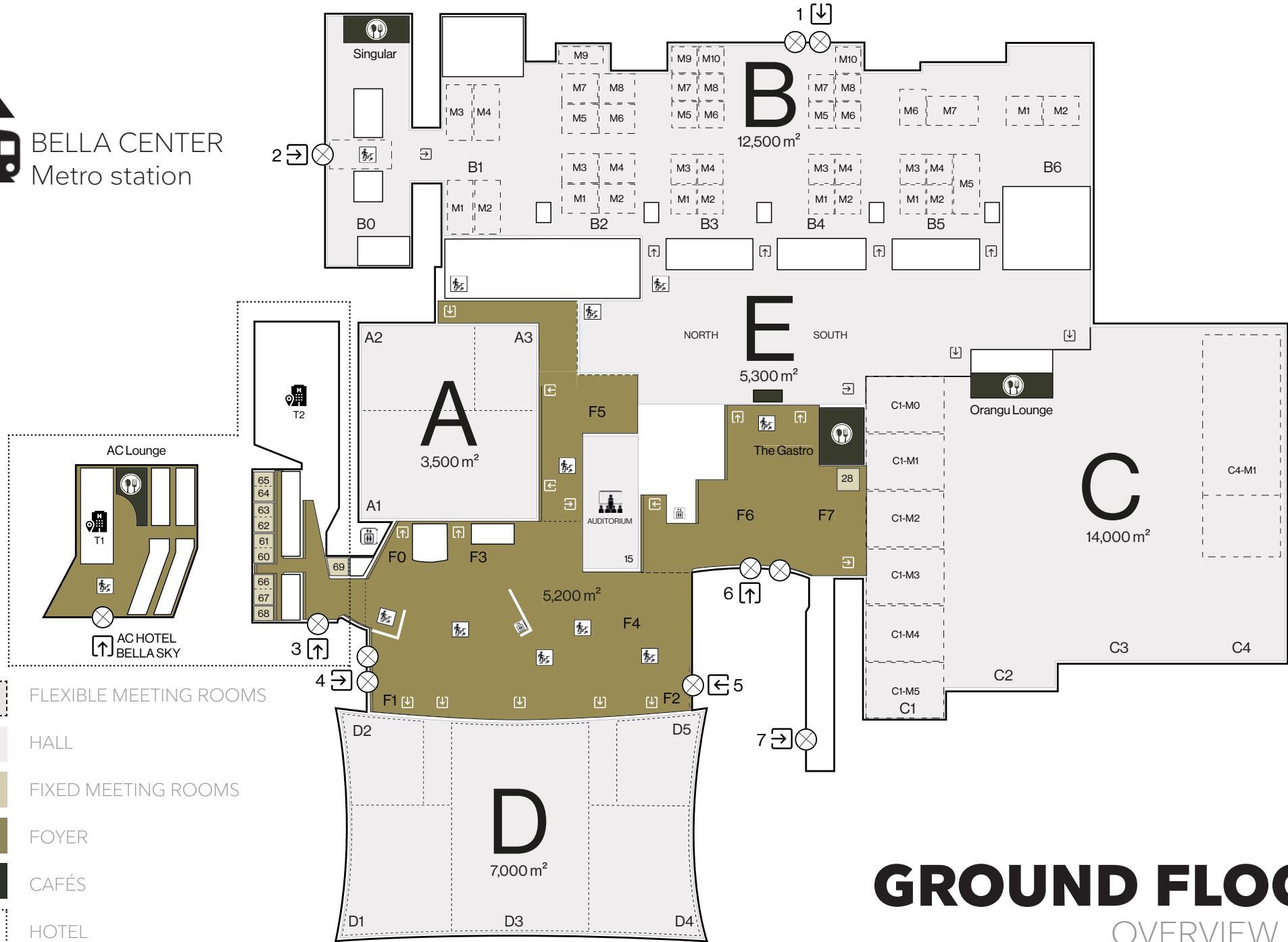
There are five halls, which can be used for exhibitions, plenaries, or other functions, along with the extensive foyer areas and balconies. The biggest plenary room can accommodate up to 7,000 people and another plenary room has space for up to 4,200.

Both plenary halls can be divided into smaller rooms, to suit the size and needs of each individual event. In total **100 meeting rooms** can be made available. All halls are conveniently placed on the ground floor with meeting rooms on both the ground floor and the first floor.



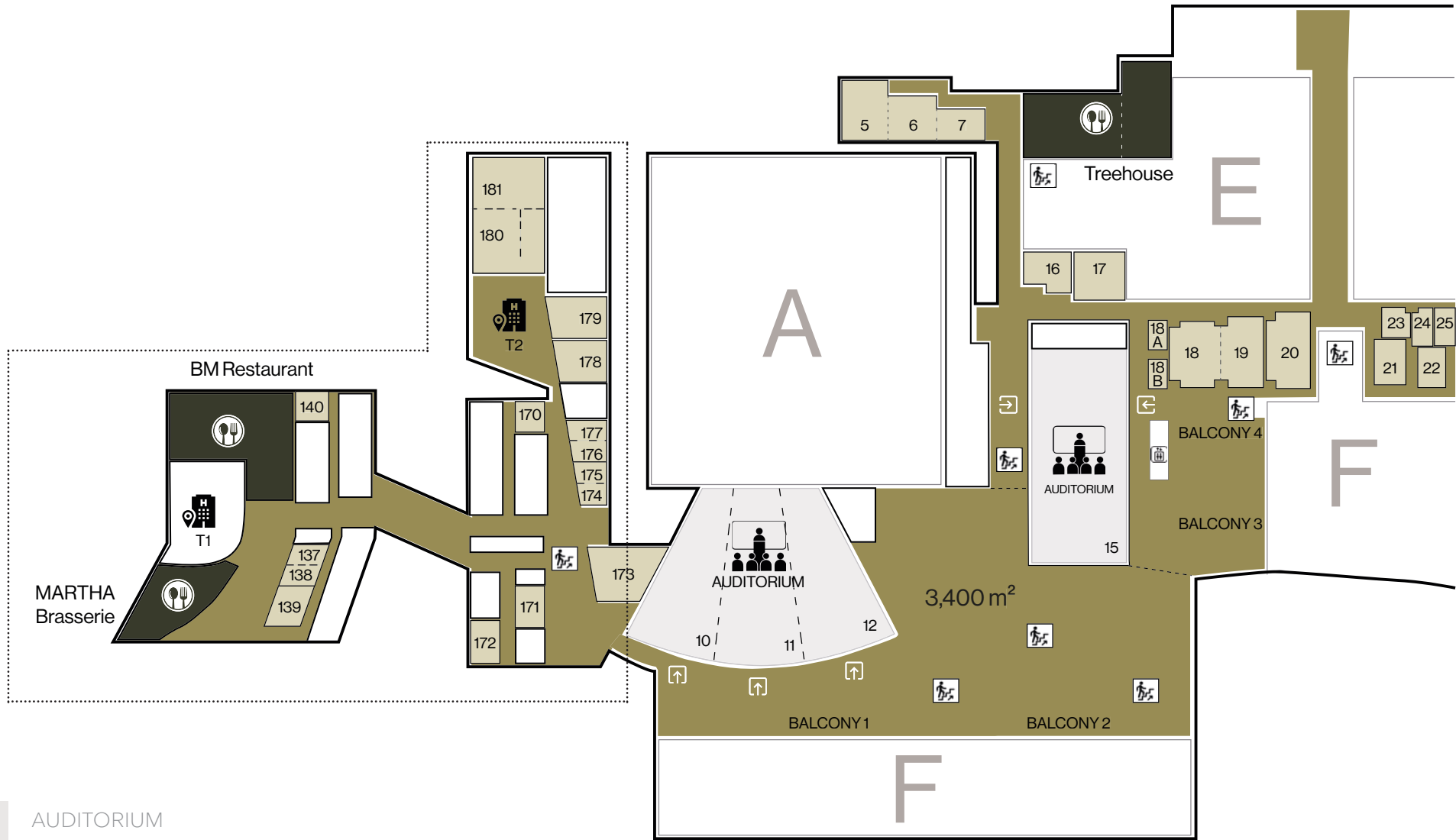


BELLA CENTER
Metro station



GROUND FLOOR

OVERVIEW MAP



- AUDITORIUM
- FIXED MEETING ROOMS
- FOYER
- CAFÉS
- HOTEL

FIRST FLOOR

OVERVIEW MAP

MEETING ROOMS- GROUND FLOOR

	Sqm.	Sq. Ft.	Dimensions L / W / H in Meters	Daylight	Theatre	Classroom	Cabaret 6 per table	Banquet** 8 per table	U-shape	Hollow square	Boardroom	Notes
60-67 (8 rooms)	19	200	5 / 3.7 / 4.2	yes							9	
2 rooms combined	38	410	5 / 7.5 / 4.2	yes	38*	8 (12*)		16*	10	16*	12	
68	15	160	5 / 2.9 / 4.2	yes							8	
69	26	280	5 / 5.4 / 4.2	yes	27	12		16	10 (14*)	16	8 (14*)	
28	11	120	4.1 / 2.7 / 2.5	no							8	

HALL B

Hall B can offer up to 40 flexible meeting rooms, of which many can be combined

1 room (B3/B4/B5)	81	870	9 / 9 / 3.2	yes/no	72	30	36	32	20	24	16	max. 22 rooms
2 rooms combined	162	1740	18 / 9 / 3.2	yes/no	168	80	60	64	38	48	40	max. 11 rooms
3 rooms combined	243	2620	27 / 9 / 3.2	yes	252	120	96	112	68	60		max. 3 rooms
4 rooms combined	324	3490	18 / 18 / 3.2	no	338	160	132	136	52	76		max. 5 rooms
6 rooms combined (B3 M5-M10)	486	5230	18 / 27 / 3.2	yes	546	260	210	232	76	104		
B1 M1-M4	162	1740	9 / 18 / 3.2	no	168	80	60	64	44	52	40	max. 4 rooms, 2 combinable
B2 M1-M8	96	1030	10.7 / 9 / 3.2	no	72	40	36	48	24	32	20	max. 8 rooms, 2-4 combinable
B2 M9	96	1030	14 / 6 / 3.2	yes	60	36	36	48	24	32	28	
B5 M5	162	1740	9 / 18 / 3.2	no	168	80	60	64	40	52	16	
B5 M6	108	1160	9 / 12 / 3.2	no	84	40	36	48	24	36	24	
B5 M7	162	1740	18 / 9 / 3.2	no	156	64	60	64	42	52	40	
B6 M1/M2	108	1160	12 / 9 / 3.2	no	96	40	36	48	24	32	24	

HALL C

Large flexible meeting rooms can be established in Hall C1 and C4

C1 M0	420	4520	22.4 / 18 / 4.5	no	420	242	204	232				
C1 M1/M2/M3/M4/M5	470	5040	26 / 18 / 4.5	no	420	264	210	240				max. 5 rooms (C1-M1: 560)
2 rooms combined	940	10080	26 / 36 / 4.5	no	924	528	420	480				max. 3 rooms
3 rooms combined	1350	14600	26 / 52 / 4.5	no	1380	792	630	720				max. 2 rooms
C4 M1	1950	20930	27 / 72 / 7.4	no	2416	1108	816	944				
C4 M2	1450	15820	27 / 55 / 7.4	no	1736	820	600	704				Not available when C4/M1 is in use

*Requires change of AV and/or furniture

**Banquet seating, space for catering station is not included

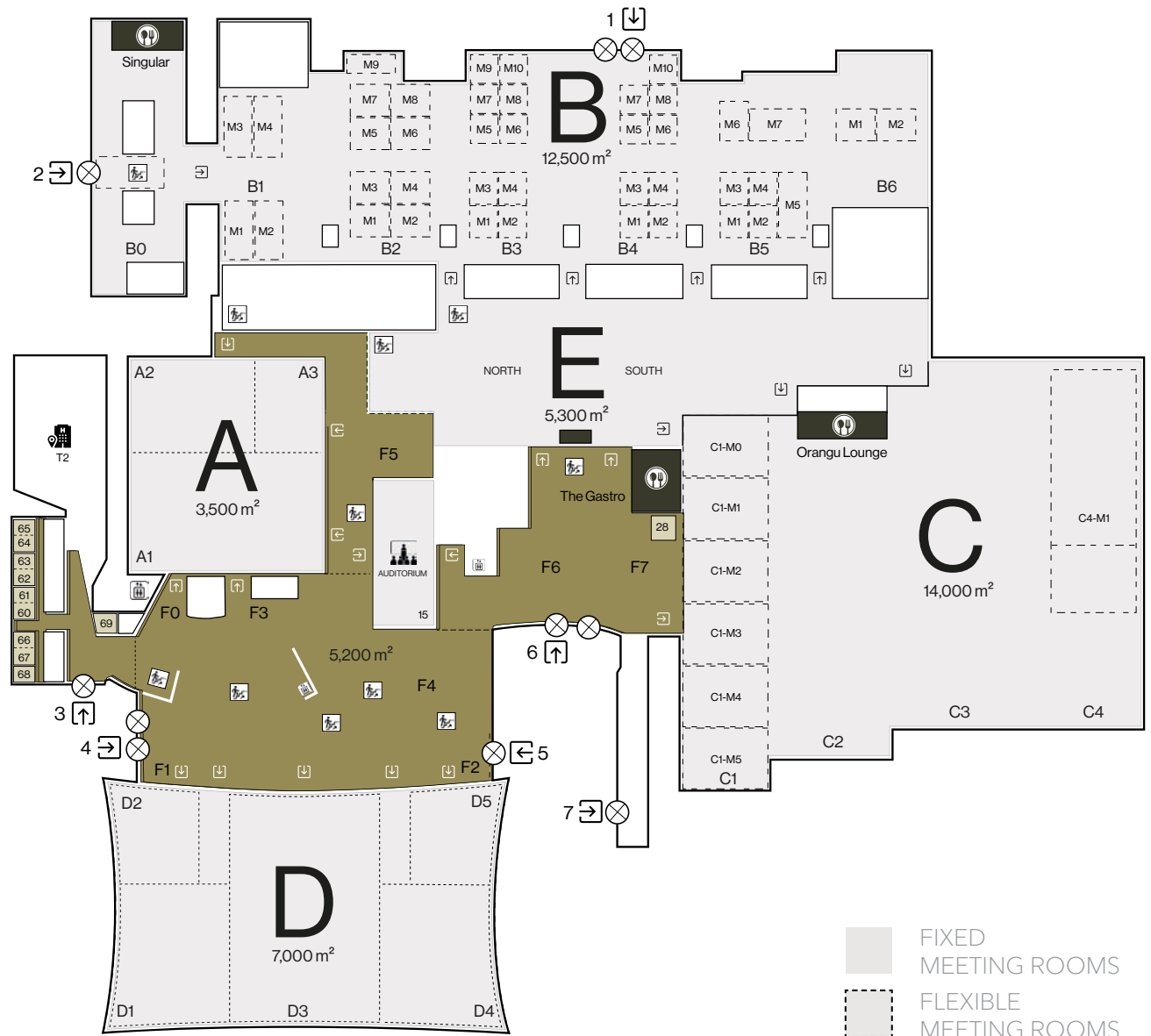
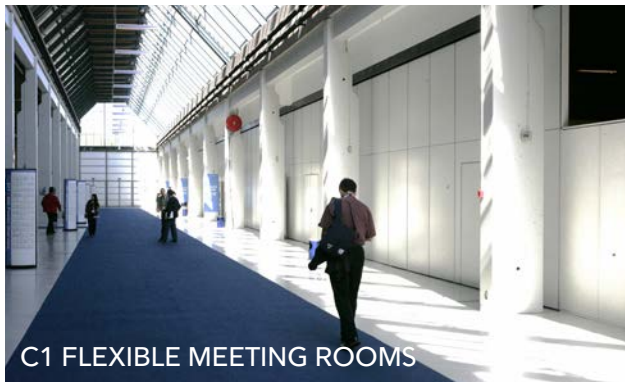
Hall A and Hall D: For capacities up to 7000 see page 12

The small meeting rooms on the ground floor of the hotel have **easy access** to the foyer and Hall A, as well as to the other halls. These rooms are often used as offices by event organizers, as small breakout rooms or sponsor meeting rooms.

Hall B offers 40 flexible rooms, which can be used individually or combined to make bigger rooms. Hall C1 offers 6 combinable breakout rooms, **perfectly placed next to an exhibition** or other functions in Hall C. In Hall C4, there is the option of setting up a plenary room that seats up to 2,400 people. Our flexible meeting rooms are easy to customize to fit desired size and set-up.

MEETING ROOMS

GROUND FLOOR, FIXED & FLEXIBLE



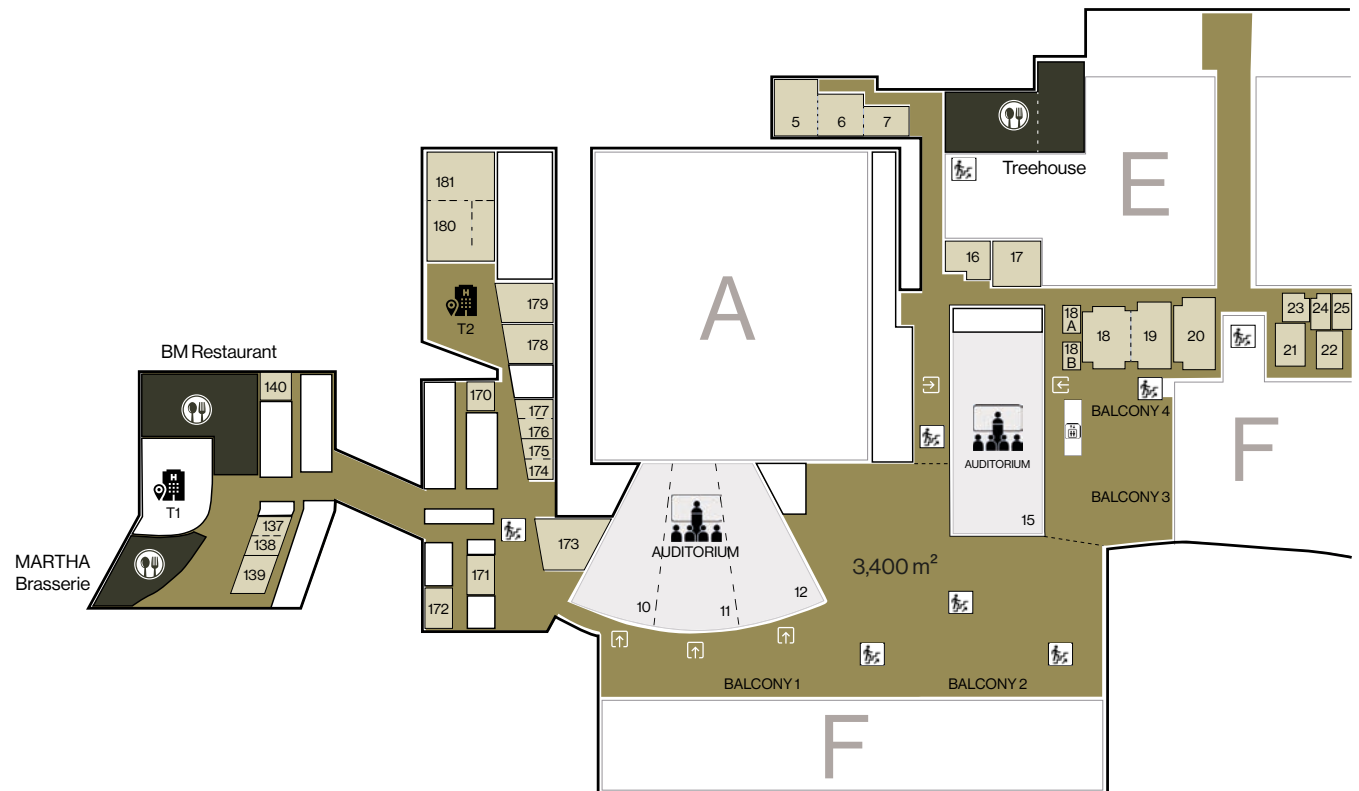
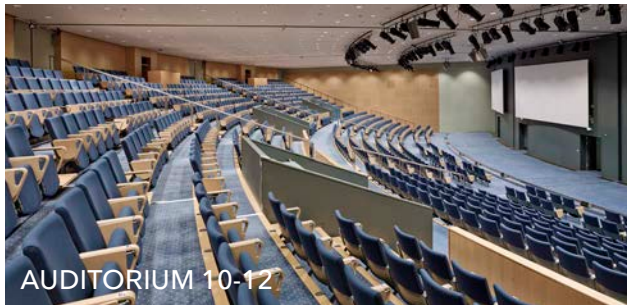
	Sqm.	Sq. Ft.	Dimensions L / W / H in Meters	Daylight	Theatre	Classroom	Cabaret 6 per table	Banquet 8 per table	U-shape	Hollow square	Boardroom	Notes
5	108	1160	9 / 12 / 2.7	indirect	93	50	36	48	34	44	28	
6	81	870	9 / 9 / 2.7	indirect	49	30	36	48	24	32	20	
7	54	580	9 / 6 / 2.7	indirect	36	18	18	32	18	24	20	
5-6	189	2030	18 / 9-12 / 2.7	indirect	166	98	72	88	46	50		
6-7	146	1570	18 / 6-9 / 2.7	indirect	103	62	42	48	42	46		
5-7	250	2730	27 / 6-12 / 2.7	indirect	200	124	90	104				
16	46	500	8.9 / 6.1 / 2.9	indirect	48	32	24	40	22	28	20	
17	81	870	9 / 9 / 2.9	indirect	48	48	36	48	26	36	20	
18a / 18b	18	190	5 / 3.5 / 2.9	no							8	2 rooms
18	108	1160	12 / 9 / 3.6	indirect	97	46	36	64	28	36	32	
19	117	1260	13 / 9.3 / 3.6	indirect	111	50	48	64	34	40	32	
18-19	216	2520	13 / 18 / 3.6	indirect	200	94	78	104	48	60		
20	126	1360	14 / 9 / 3.7	indirect	123	56	48	64	34	40	32	
21	49	530	8.5 / 5.8 / 3.3	indirect							18	
22	35	380	7 / 5 / 3.1	indirect							14	
23	28	300	5.5 / 5.2 / 2.9	indirect							12	
24	28	300	4 / 7 / 2.9	indirect							10	can be combined
25	28	300	4 / 7 / 2.7	indirect							10	can be combined
137	20	220	5.3 / 3.7 / 4.2	indirect		8*					9 (11)	
138	20	220	5.3 / 3.7 / 4.2	indirect		8*					9 (12)	
137-138	40	430	5.4 / 7.5 / 4.2	indirect	30*	12 (16*)			10		12 (18)	
139	42	450	5.6 / 7.5 / 4.2	indirect							14	
140 VIP	36	390	5.8 / 6.4 / 4.2	yes							13	
170	26	280	5.8 / 4.7 / 3.7	yes							8	
171 VIP	44	470	6.1 / 7.3 / 3.7	indirect							13	
172 VIP	35	380	5.7 / 6.4 / 4.2	yes							13	
173	100	1250	11 / 10.4 / 3.7	yes	95	48	42	56	28	32	28	
174	19	210	4.8 / 3.7 / 3.7	yes							9 (12)	
175	21	230	4.8 / 3.8 / 3.7	yes							9 (12)	
174-175	42	450	4.8 / 7.5 / 3.7	yes	38*	16	18*		10 (14*)		12 (18)	
176	23	250	6.7 / 3.7 / 3.7	yes							9 (12)	
177	23	250	5.7 / 3.8 / 3.7	yes							9 (12)	
176-177	47	510	5.7 / 7.5 / 3.7	yes	38*	16	18*		10 (14*)		12 (18)	
178	62	670	8.3 / 7.6 / 3.7	yes	49	24	30	40	18	24	16	
179	70	750	9.3 / 7.6 / 3.7	yes	49	24	30	40	18	24	16	
180	117	1260	10.8 / 10.7 / 3.7	yes	96	48	48	48	28	40	20	Reception max 170
181	158	1700	10.7 / 14.5 / 3.7	yes	120	60	48	48	36	44	32	Reception max 170
180+181 Ballroom	320	3500	14.5 / 21.6 / 3.7	yes	315	160	126	160	42	72	48	
AUDITORIUM 10/11/12	395	4250	10-18 / 26 / 7.7	no	310							10/11/12 can be combined
AUDITORIUM 10-12	1185	12760	30-54 / 26 / 7.7	no	930							
AUDITORIUM 15	720	7750	18 / 40 / 9.5	no	582							also access from ground floor

The meeting rooms on first floor are situated in Hotel Tower 1, Hotel Tower 2 and inside the Bella Center. All rooms are **easily accessible** with seamless flow from the balcony or via the foyer areas on the ground floor.

Most of the rooms have **natural light** and are fully equipped with AV. The rooms are modern and welcoming. Some rooms can be **combined to make larger rooms**. Auditoriums 10, 11 and 12 can be combined to create a large auditorium with seating for 930 people.

MEETING ROOMS

FIRST FLOOR



- AUDITORIUMS
- FIXED MEETING ROOMS

HALL A

	Sqm.	Sq. Ft.	Dimensions L / W / H in Meters	Daylight	Max Persons*	Theatre	Classroom	Cabaret 6 per table	Banquet** 8 per table	Notes
Hall A	3500	37660	56 / 63 / 9	no	4200	4100	2146	1746	1960	Adjustable ceiling height
A1	2000	21530	56 / 36 / 9	no		2400	1128	984	1112	
A2	1000	10570	37 / 27 / 9	no		1054	472	414	440	
A3	500	5560	19 / 27 / 9	no		561	258	210	232	
A2+A3	1500	16140	57 / 27 / 9	no		1730	810	660	784	

HALL B

Hall B, incl. light arcades	12500	133900	243 / 45-81 / 3-3.3	yes	6100				5142***	
B0/1	1000	10740	27 / 45 / 3.3	yes	600	390	228	244	288	
B0/2	785	8470	27 / 36 / 3.3	yes		390	216	216	232	
B1	1860	20050	36 / 54 / 3	yes					786***	Incl. 390 sqm. light arcade
B2	1985	21390	36 / 63 / 3	yes					984***	Incl. 365 sqm. light arcade
B3	2070	22260	36 / 63 / 3	yes					984***	Incl. 365 sqm. light arcade
B4	2070	22260	36 / 63 / 3	yes					984***	Incl. 365 sqm. light arcade
B5	1900	20480	36 / 57 / 3	yes					876***	Incl. 390 sqm. light arcade
B6	1200	13080	27 / 45 / 3	no					528***	

HALL C

Hall C, including light arcades	14000	158000	135 / 96-108 / 4-7.4	yes	8000				5382***	
C1	3800	40970	36 / 108 / 4.3	yes					1242***	Incl. 890 sqm. light arcade
C2	3500	37480	37 / 96 / 5.8	yes					1452***	Incl. 890 sqm. light arcade
C3	3900	41850	36 / 108 / 7.4	yes					1532***	Incl. 970 sqm. light arcade
C4	2800	30520	27 / 108 / 7.4	yes					1056***	

HALL D

Hall D	7000	72050	102 / 63 / 12	yes	8600	7000	4000 ⁽¹⁾	3474	3512	⁽¹⁾ subject to available furniture
D1	1210	13020	30 / 38 / 12	yes	1300	1300	630	516	576	
D2	675	7100	24 / 27 / 12	yes	750	648	296	252	320	
D3	2700	28430	42 / 63 / 12	yes	2850	2850	1526	1404	1392	
D4	1210	13020	30 / 38 / 12	yes	1300	1300	632	516	576	
D5	675	7100	24 / 27 / 12	yes	750	648	272	252	320	
D1-D2 / D4-D5	2030	21800	30 / 63 / 12	yes	2050	2049	1150	960	864	
D1-D3 or D3-D5	4700	50220	72 / 63 / 12	yes	4900	4899	2688	2310	1984	

HALL E

Hall E	5300	57080	170 / 18-44 / 7.4-21.8	yes	2500				2200	
E North	1950	21150	64 / 18-42 / 9.3-21.8	yes					648	
E South	3300	35930	106 / 26-44 / 7.4-15.8	yes					1296	

* max persons based on fire regulations, however depending on overall total

** not including space for F&B stations inside the hall

*** long tables

The halls of the Bella Center are located on the ground floor and have hosted numerous events such as scientific exhibitions, congresses, e-sport, kick-offs, car launches, parties, book fairs and more. Each hall has a unique look and feel.

Hall E has abundant natural daylight, **a glass ceiling of up to 25 meters** and tall green trees. Hall A is a black box with a carpeted floor, 9 meters to the ceiling – a good choice for keynote plenaries, exhibitions, and parties.

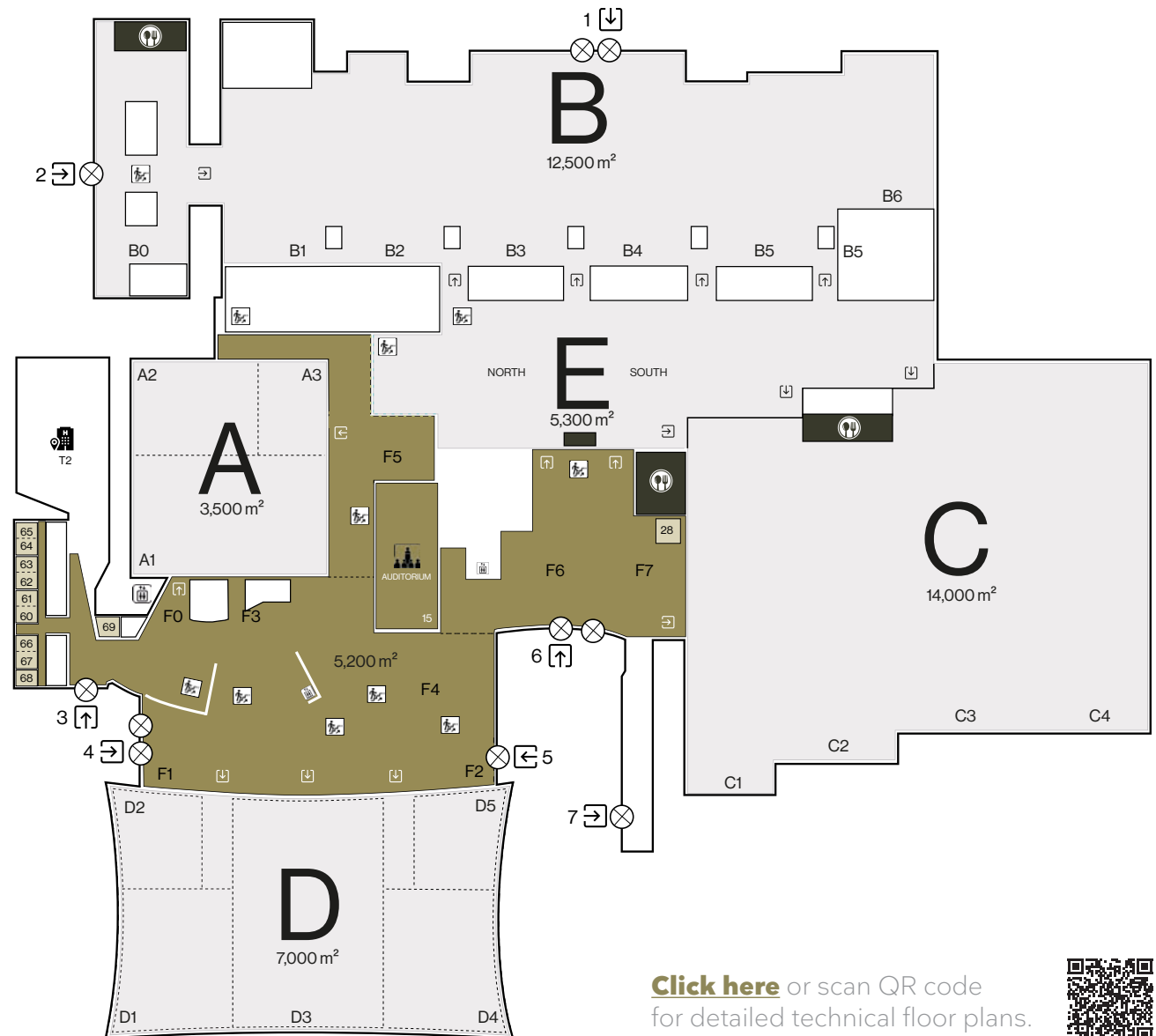
Hall D is perfect for impressive large-scale plenaries, parties, or exhibitions. It has a tile floor, a **12-meter ceiling height** and can be divided into five soundproof halls.

Hall B, with its industrial style and clean canvas, creates a flexible background for any type of set-up. The largest space, Hall C is often the natural choice for **large exhibitions**, in combination with our flexible meeting rooms.



HALLS

GROUND FLOOR



[Click here](#) or scan QR code for detailed technical floor plans.



RESTAURANTS & CAFÉS

	Sqm.	Sq. Ft.	Dimensions L / W / H in Meter	Daylight	Standard Setup	Location	Notes
Treehouse North	220	2400	18 / 12 / 3.2	yes	124	First floor overlooking Hall E	
Treehouse South	200	2150	6-10 / 22 / 3.2	yes	114	First floor overlooking Hall E	
Treehouse	420	4550	28 / 22 / 3.2	yes	234	First floor overlooking Hall E	
The Gastro	280	3050	16 / 18 / 2.9	no	138	Foyer F7 and access to Hall E	
Orangu Lounge	190	2050	27 / 7 / 2.5	yes	109	Hall C2	
BM Restaurant	419	4500	24 / 14-22 / 5.3	yes	208	Hotel Tower 1, first floor	
MARTHA Brasserie	180	1950	15 / 12 / 5.3	yes	75	Hotel Tower 1, first floor	
AC Lounge	105	1200	7 / 15 / 5.3	yes	60	Hotel Tower 1, ground floor	
SUKAIBA	297	3200	25 / 15 / 2.4-3	yes	142	Hotel Tower 2, 23rd floor	
SUKAIBA Lounge	73	800		yes	28	Hotel Tower 2, 23rd floor	
Singular	118	1250	14 / 8.3 / 3.2	yes	21 (+14)	Hall B0	

FOYERS & BALCONIES

	Sqm.	Sq. Ft.	Dimensions L / W / H in Meter	Daylight	Max persons*	Banquet	Notes
Foyer F0-F7	8300	89300		yes	7000		
Foyer F0	400	4350	11-17 / 26 / 3.3	yes			
Foyer F1	1100	11600	61 / 16-18 / 8.8-10	yes			
Foyer F2	650	7000	39 / 15-18 / 8.8-10	yes			
Foyer F3	2000	21100	52 / 35 / 3.3	yes			
Foyer F4	1125	12100	39 / 29 / 3.3	yes			
Foyer F5	950	10600	14 / 44 / 2.5	no			
Foyer F6	1200	1300	- / - / 3.3 - 8.2	yes	1600		Max. is including Balcony 3 & 4
Foyer F7	900	9600	18 / 34 / 8.2	yes			Max. is including Balcony 3 & 4
Balcony 1-4	3400	36400	- / - / 4	yes		1472	
Balcony 1	1450	15600	60 / 13-44 / 4	yes		520	
Balcony 2	1040	11200	38 / 24-44 / 4	yes		600	
Balcony 3	480	5200	25 / 20 / 4	yes		216	
Balcony 4	420	4500	18-25 / 20 / 4	yes		136	
Ballroom Foyer	200	2250	15 / 13 / 5	yes	132		

* max persons based on fire regulations, however depending on overall total

The **spacious foyers** give plentiful opportunities for registration areas, places to serve catering and hold standing receptions as well as combining with the halls - all on one floor. There are also many suitable places for branding material and signage. **Multiple entrances** make simultaneous events possible without interference from one another.

Our **permanent cafes** are adaptable. Although they have established concepts, you are not bound to these, and their functions and menus can be adjusted to suit your event. We take great pride in serving our own **sustainable coffee** in addition to a selection of hot and cold food with **locally sourced ingredients**.

CAFES & FOYERS

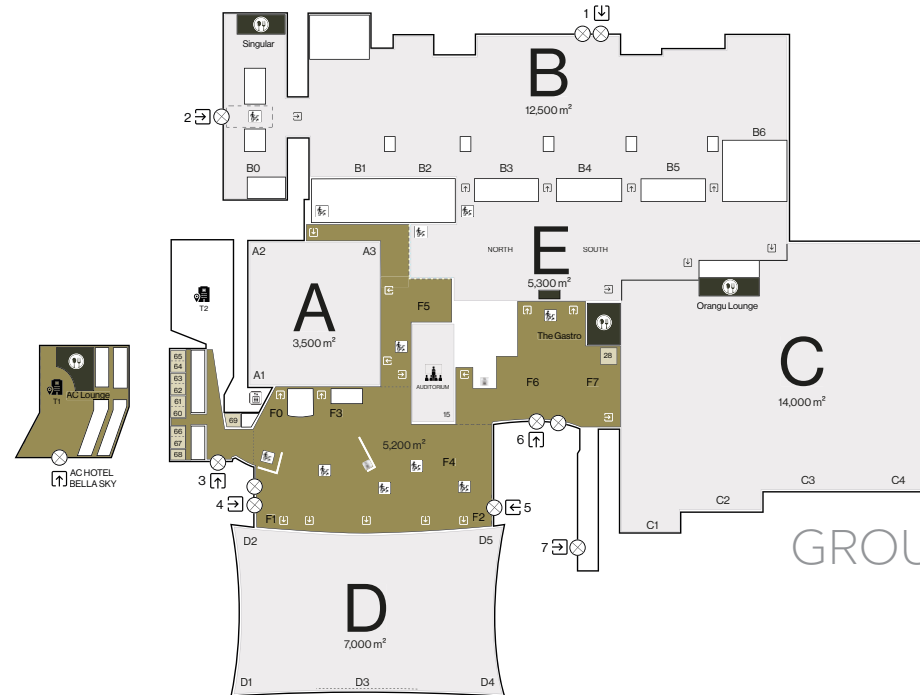
GROUND & FIRST FLOOR



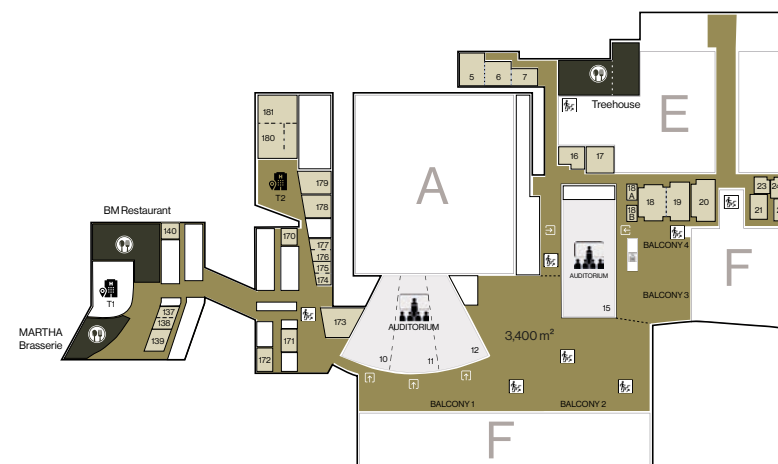
FOYER, F1-F2



TREEHOUSE



GROUND FLOOR



FIRST FLOOR



OUR SERVICES



FULL SERVICE PROVIDER

We can assist with stand design, registration facilities, IT and AV solutions, catering, security staff, cleaning, decoration and more.



RESPONSIBLE HOSPITALITY

We strive to ensure sustainability at all times in every aspect of our business. We call our 360-degree approach to sustainability “Responsible Hospitality”.



A PART OF BELLAGROUP

Bellagroup is one of Denmark’s leading companies in the hospitality industry. In addition to Bella Center Copenhagen the group offers 1,600 hotel rooms across Copenhagen Marriott Hotel, AC Hotel Bella Sky Copenhagen and Crowne Plaza Copenhagen Towers.

HEALTH & SAFETY

Your safety and well-being as a guest in our venue, is our top priority. Our friendly in-house security staff ensures everybody has the feeling of safety.

4 STAR HOTEL ON SITE

The iconic AC Hotel Bella Sky Copenhagen is integrated into the venue and complements the seamless delegate experience.

Bella Center Copenhagen
Center Boulevard 5
DK - 2300 Copenhagen S
T: +45 3252 8811
E: congress@bellacenter.dk
W: bellacenter.dk

February 2024
Document is subject to change and type errors.

BELLA ·
CENTER
COPEN
HAGEN